

ALM PRO+

System Requirements



Oude Oeverstraat 120-4
6811 JZ
Arnhem
The Netherlands

t: +31(0) 88 1221 800
f: +31(0) 88 1221 899
www.rsconnect.net
info@rsconnect.net

General

This manual covers the ALM Pro+ Backend Database and the Management Console system requirements.

The ALM Pro+ Backend Database is a web-based application, hosted within the customer's environment and collaborates with the ALM Pro client software. The ALM PRO+ backend contains the intelligence of the solution and the database where all information is stored. The ALM PRO clients send their reporting information to this server and this server supplies configurations and licenses information to the ALM PRO clients.

The ALM PRO+ Management Console is the client, or reporting station, used to manage ALM PRO installations, configurations and runs reports. It is used to configure ALM PRO+ with all its settings and features.

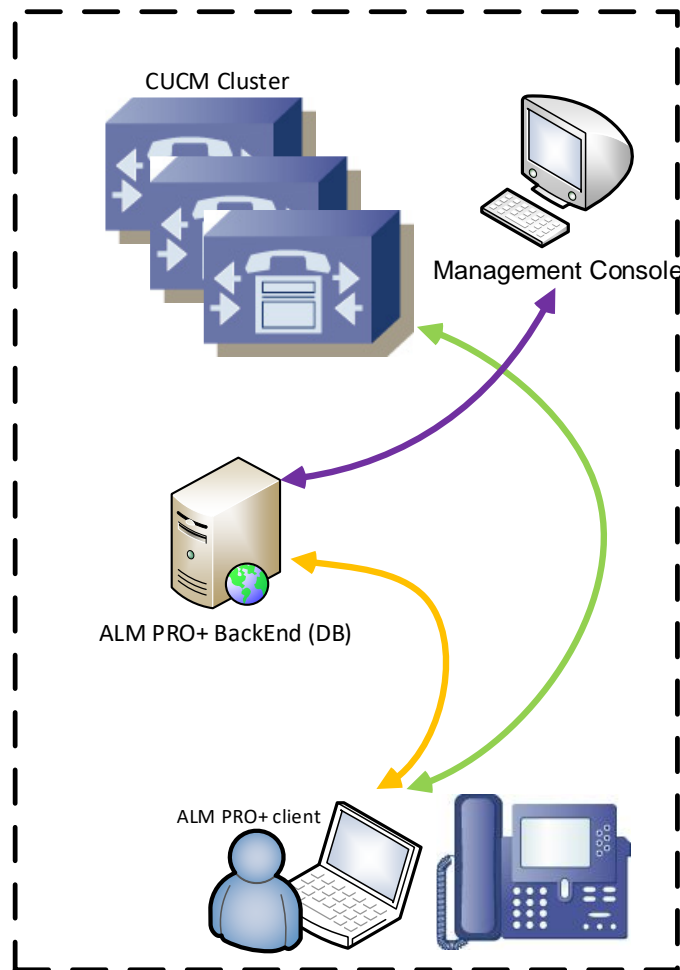
The main features of the ALM management console are:

- Manage ALM profiles and users
- Manage ALM client features and permissions
- Manage ALM license usage and renewal
- Display Reports and export statistics and data

Components

The ALM PRO+ solution consists of two components.

1. ALM PRO+ Backend
2. Management Console



System requirements

These system requirements have been scaled for deployments up to 10.000 users on one single instance.

> ALM PRO+ Backend

The ALM PRO+ Backend can be a physical server or a Virtual Machine (VM). For best results we recommend:

System requirements:

- 1 (v)CPU or more, 1Ghz or faster
- 2GB of RAM
- 80MB of free disk space

Software requirements:

- Windows 2008 R2 or newer
- IIS 7 or higher
- dot.NET 4.0 or higher
- SQL Server Express Advanced 2008 R2 or newer
- SQL Server Management Studio
- SQL Database space: 25Mb initially + 100Mb per year per 1000 users

Environmental requirements:

- HTTP (80) and HTTPS (443) available for communication between the ALM PRO client and the ALM PRO+ server

> ALM PRO+ Management Console

The ALM PRO+ Management Console is accessible from any device capable of browsing a website.

Additional Information

For additional information please contact or visit:

- United Kingdom: +44 203 608 8259
- Other countries: +31 88 1221 800
- <http://www.rsconnect.net>
- sales@rsconnect.net